

A1 in Northumberland: Morpeth to Ellingham

Scheme Number: TR010059

AQ.2 Receptors (Part A, Part B and the Scheme)

AFPP Regulation Rule 8(1)(b)

Planning Act 2008

Infrastructure Planning (Prescribed Forms and Procedure)

Regulations 2009

Infrastructure Planning

Planning Act 2008

**The Infrastructure Planning
(Applications: Prescribed Forms
and Procedure) Regulations 2009**

**The A1 in Northumberland: Morpeth to
Ellingham**

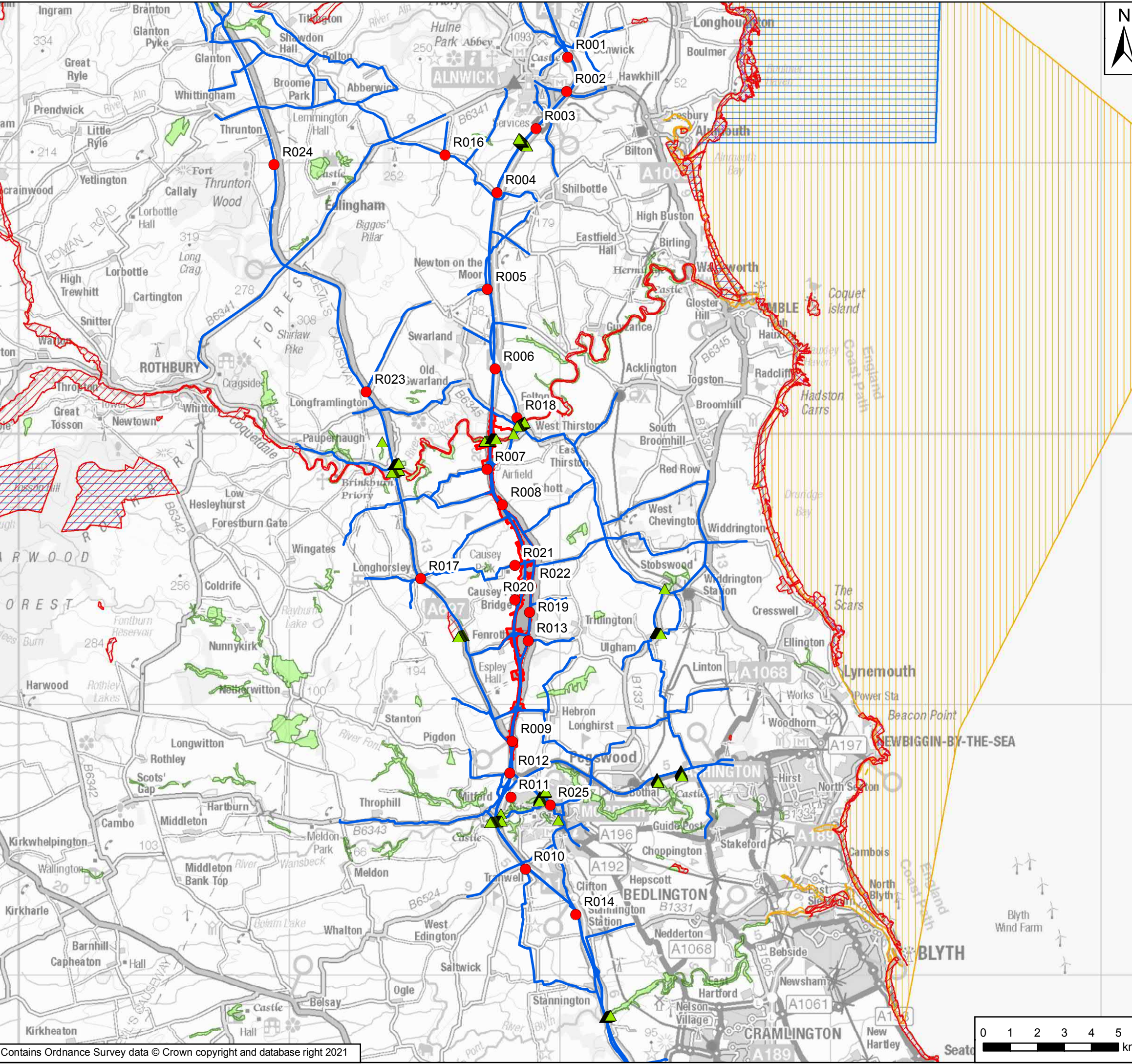
Development Consent Order 20[xx]

Receptors (Part A, Part B and the Scheme)

Regulation Reference:	APFP Regulation Rule 8(1)(b)
Planning Inspectorate Scheme Reference	TR010059
Application Document Reference	TR010059/7.8.24
Author:	A1 in Northumberland: Morpeth to Ellingham Project Team, Highways England

Version	Date	Status of Version
Rev 0	January 2021	Deadline 1

Date Saved: 07/01/2021 18:16:12 User Name: UKSRC004
 Document Path: \\uk.wspgroup.com\central_data\Projects\7003600x\70036004 - A1 Northumberland\03 Environment\GIS\Environmental Statement_ES Figures 05-2020\Figure 5.2 - Air Quality Receptors Page 1_v2.mxd



Key	
	Part A Order Limits
	Areas Excluded from Order Limits
▲	Ecological Receptors
●	Human Receptors
—	Modelled Links
	Site of Special Scientific Interest
	Special Area of Conservation
	Special Protection Area
	Ramsar
	Ancient Woodland

Rev	Date	Description	By	Chk'd	App'd
P04	Jan 2021	Fourth Issue	SC	SH	BTJ
P03	June 2020	Third Issue	GH	LP	AT
P02	12/07/19	Second Issue	GH	LP	AT
P01	April 2019	First Issue	SC	LP	AT

Client

Project Title: A1 in Northumberland: Morpeth to Ellingham

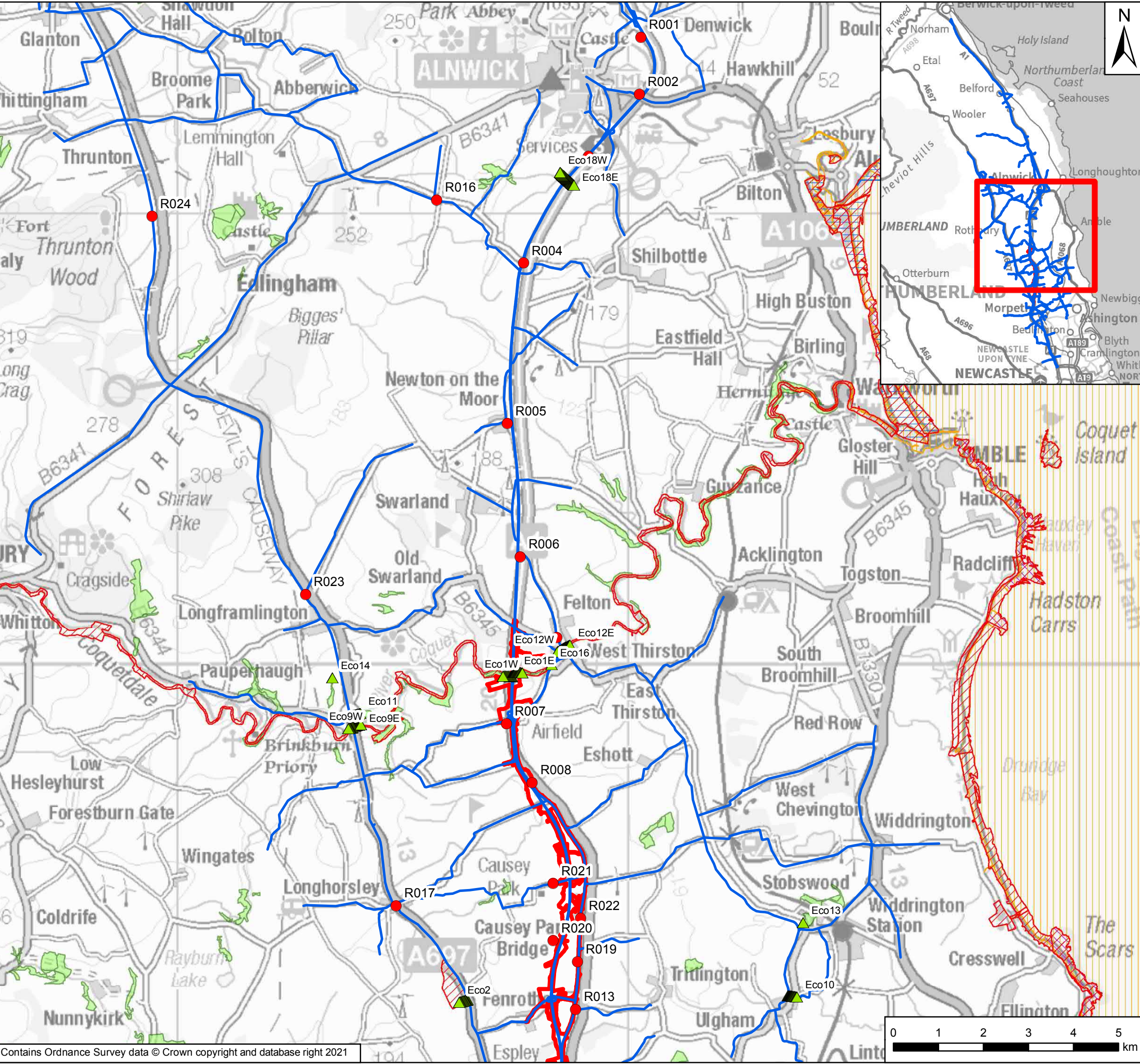
Drawing Title: Figure 5.2 Human and Ecological Receptors Assessed Part A
Page 1 of 3

Scale	Drawn	Checked	Approved	Authorised
1:136,455	SC	SH	BTJ	DM
Original Size	Date	Date	Date	Date
A3	Jan 2021	Jan 2021	Jan 2021	Jan 2021

Drawing Status: For Information
Suitability: S1

Drawing Number Project HE551459	Originator WSP	Volume 6.5	Project Ref. No. 70044136
M2F Location	RP Type	LE Role	1942 Number
			Revision P04

Date Saved: 07/01/2021 17:24:47 User Name: UKSRC004
 Document Path: \\uk.wspgroup.com\central_data\Projects\700360xx\70036004 - A1 Northumberland\03 Environment\GIS\Environmental Statement_ES Figures 05-2020\Figure 5.2 - Air Quality Receptors Page 2_v2.mxd



Key

- ▲ Ecological Receptors
- Human Receptors
- Modelled Links
- Part A Order Limits
- Site of Special Scientific Interest
- Special Area of Conservation
- Special Protection Area
- Ramsar
- Ancient Woodland

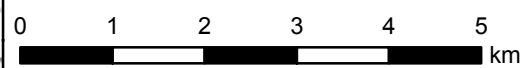
P04	Jan 2021	Fourth Issue	SC	SH	BTJ
P03	June 2020	Third Issue	GH	LP	AT
P02	12/07/19	Second Issue	GH	LP	AT
P01	April 2019	First Issue	SC	LP	AT
Rev	Date	Description	By	Chk'd	App'd

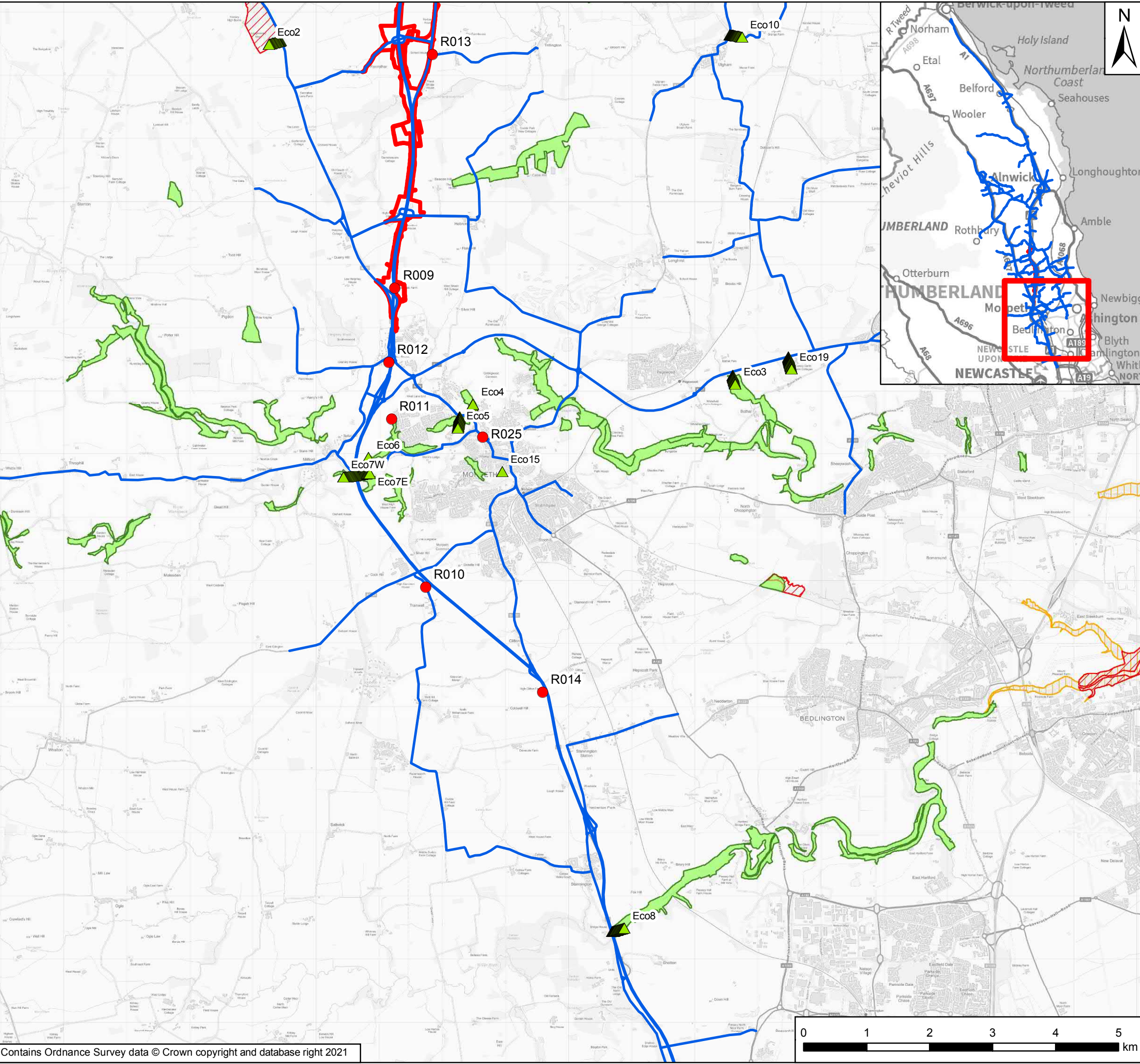
Client

Project Title: A1 in Northumberland: Morpeth to Ellingham
 Drawing Title: Figure 5.2 Human and Ecological Receptors Assessed Part A
 Page 2 of 3

Scale	1:82,007	Drawn	SC	Checked	SH	Approved	BTJ	Authorised	DM
Original Size	A3	Date	Jan 2021	Date	Jan 2021	Date	Jan 2021	Date	Jan 2021
Drawing Status	For Information							Suitability	S1

Drawing Number	HE551459	Originator	WSP	Volume	6.5	Project Ref. No.	70044136
M2F	RP	LE	1942	Revision	P04		
Location	Type	Role	Number				





Key

- ▲ Ecological Receptors
- Human Receptors
- Modelled Links
- Part A Order Limits
- Site of Special Scientific Interest
- Special Area of Conservation
- Special Protection Area
- Ramsar
- Ancient Woodland

Rev	Date	Description	By	Chk'd	App'd
P04	Jan 2021	Fourth Issue	SC	SH	BTJ
P03	June 2020	Third Issue	GH	LP	AT
P02	12/07/19	Second Issue	GH	LP	AT
P01	April 2019	First Issue	SC	LP	AT

Client

Project Title: A1 in Northumberland: Morpeth to Ellingham

Drawing Title: Figure 5.2 Human and Ecological Receptors Assessed Part A
Page 3 of 3

Scale	Drawn	Checked	Approved	Authorised
1:58,625	SC	SH	BTJ	DM
Original Size	Date	Date	Date	Date
A3	Jan 2021	Jan 2021	Jan 2021	Jan 2021
Drawing Status				Suitability
For Information				S1

Drawing Number Project HE551459	Originator WSP	Volume 6.5	Project Ref. No. 70044136
M2F Location	RP Type	LE Role	1942 Number
			Revision P04



© Crown copyright 2021.

You may re-use this information (not including logos) free of charge in any format or medium, under the terms of the Open Government Licence. To view this licence:

visit www.nationalarchives.gov.uk/doc/open-government-licence/

write to the **Information Policy Team, The National Archives, Kew, London TW9 4DU**, or email

psi@nationalarchives.gsi.gov.uk.

This document is also available on our website at www.gov.uk/highways

If you have any enquiries about this document
A1inNorthumberland@highwaysengland.co.uk

or call **0300 470 4580***.